

2022 Global Collaborative Summer Program

Kyung Hee University



Overview

- Established in 1949
- Location(3 Campuses)
 - Seoul 991,480 m²
 - Global(Suwon) 2,063,900 m²(approx. 40km South of Seoul)
 - Gwangneung 48,562 m²(approx. 4 miles East of Seoul)
- Structure
 - Undergraduate : 23 Colleges / Schools , 91 Majors
 - Graduates : 14 schools
 - 2 University Hospitals
- Student Enrollment (2021)
 - Total number of students : 42,326
 - Number of International students : 5,346
- Full-time professors : 1,361(2021)



Beautiful Campus

Neo-Renaissance Gate, Global Campus



Beautiful Campus

Peace Hall, Seoul Campus



Beautiful Campus

Main Administration Building



Remarkable Kyung Hee

Internationally Well Recognized

- Overall Rankings

Evaluation Institution	Joong-Ang Daily	QS World Rankings	QS Asia Rankings	THE World Rankings
2021	7	236	36	276



Ranked 1st in International Outlook amongst Korean Universities in the 2021 THE World University Ranking

- Ranked 1st in International Outlook for 3 consecutive years since 2019

International Students Support Programs

- Korean Culture Experience Activities
- Global Class Assistant
- Academic Assistance



Kyung Hee Alumni



Moon Jae-In

19th President
of Korea
(1972~1980 Law College)

Kyung Hee Alumni



G-Dragon



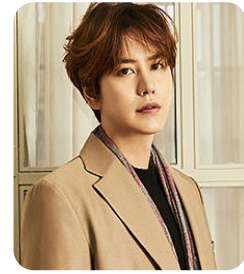
TVXQ



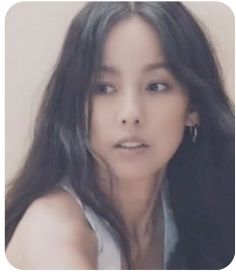
Rain



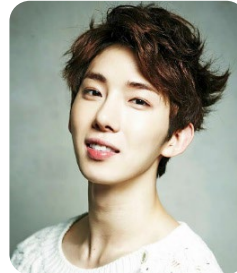
Gong Yoo



Kyu Hyun



Lee Hyori



2AM



Son Dambi



Davichi



Kim Taeri



KARA



Yae Eun

GLOBAL COLLABORATIVE SUMMER PROGRAM





Overview

Mission Statement

In relationship with prestigious universities and pre-eminent international institutions, Kyung Hee University sets a new paradigm for higher education in the 21st century by cultivating future generations who will shape a better human society and a new civilization.

Program's Goals

- Building an international network through the exchange of human resources and collaborative research
- Providing students and professors with a variety of High-Quality education and research opportunities
- Cultivating world citizens as leaders of global civil society

GC 2022 Summer Program

Theme: Global Civilization: Cultural Exchange, Global Citizenship, Pandemic

Section: 1) Global Agenda and Action
2) Peace and Global Solidarity
3) Humanity and Global Civilization

Duration: 3-4weeks

Online Classes(3weeks) + On-site Korean Culture Experience Activities(1week)

**Korean Culture Experience Activities are optional.*



Courses

A. Global Agenda and Action

Course	Professor	Affiliation	Credits
Sustainable Development: The Role of Business	Oliver F. Williams	Univ. of Notre Dame	3
On Algorithmic Technology: Philosophy and the Control Society	Joff P.N. Bradley	Teikyo Univ.	3
	Hsien-hao Sebastian Liao	National Taiwan Univ.	
	Alex Taekgwang Lee	Kyung Hee Univ.	
Climate Change and ESG Management	Robert N. Stavins	Harvard Univ.	3
	Hyungna Oh	Kyung Hee Univ.	
The Polar Oceans, Climate Change and Climate Restoration	Peter Wadhams	Univ. of Cambridge	3

Courses

B. Peace and Global Solidarity

Course	Professor	Affiliation	Credits
The United Nations and Global Issues: Understanding the Dynamics and Workings of the UN System	Joon Oh	Kyung Hee Univ. (former Ambassador of Korea to the United Nations)	3
International Relations: Yesterday, Today, and Tomorrow: Theory, History, and Policy Debates	G. John Ikenberry	Princeton Univ.	3
Understanding Gender Inequality	Irina Bokova	Kyung Hee Univ. (former Director-General of UNESCO)	3
	Hwan Hee Park	Kyung Hee Univ.	
Civil Society, Multilateralism and the Future: Issues that Matter and Shape the Future	Liberato C. Bautista	Conference of Non-Governmental Organizations (CoNGO)	3
ASEAN Quality Education	Roger Y. Chao Jr.	Head of Education, Youth and Sports Division, ASEAN Secretariat	3

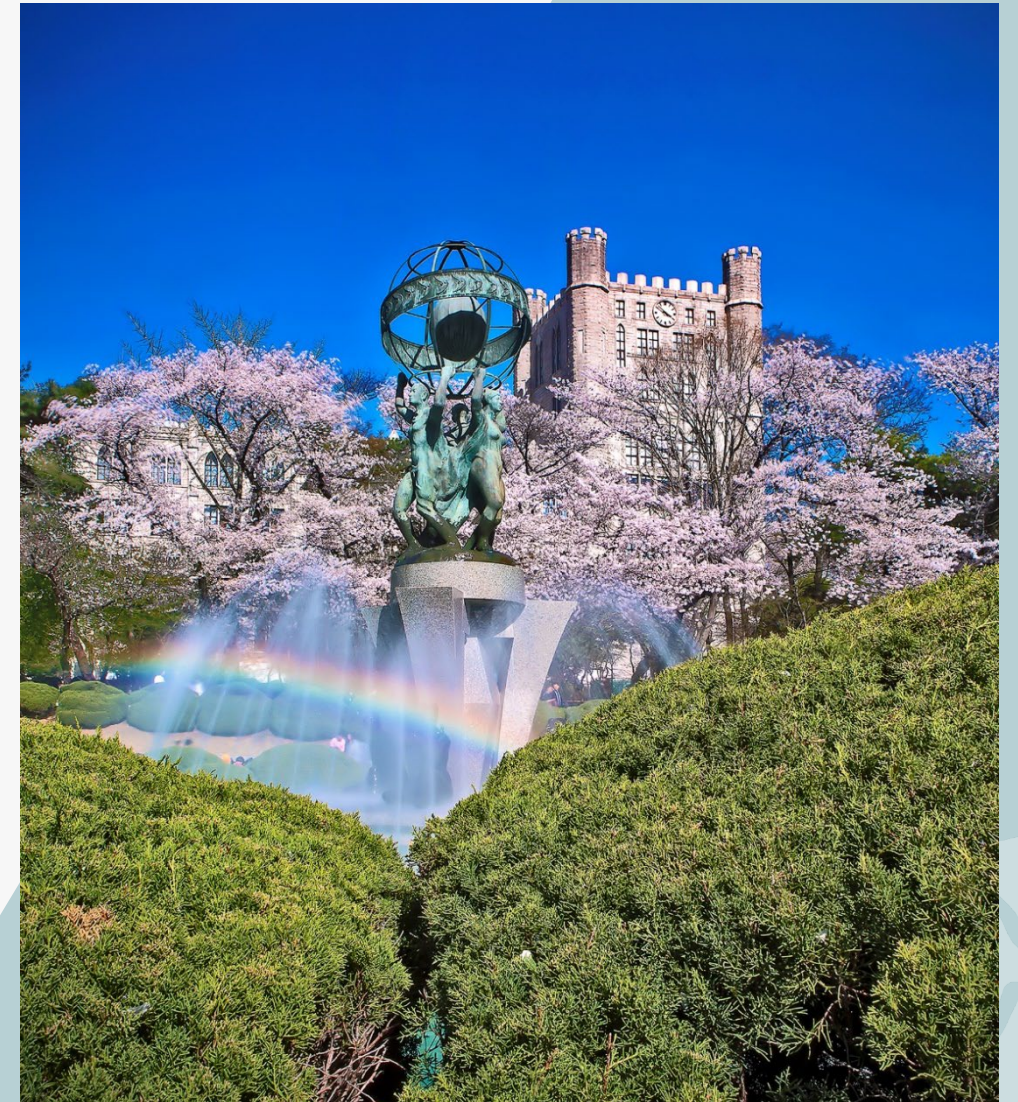
Courses

C. Humanity and Global Civilization

Course	Professor	Affiliation	Credits
Global Korean Pop Culture	Sarah Keith	Macquarie Univ.	3
Creativity and Innovation in NGOs: Understanding How to Become a Social Entrepreneur	Ram A. Cnaan	Univ. of Pennsylvania	3
Korean Language Level I	Jung Sup Kim	Kyung Hee Univ.	3
Korean Language Level 2	Jung Sup Kim	Kyung Hee Univ.	3
Understanding Korean culture in the context of East Asia	Lucy Hyekyung Jee	Sungkyunkwan Univ.	3

Academic Calendar

Global Collaborative 2022 Summer Program		
February	16	Applications Start
March	31	Early Bird Applications End *Early Bird Benefit : Application fees Waiver
May	20	Applications End
June	24	Online Orientation
	26	Dormitory Check-in
	27	Classes Begin
	27-28	Course Add & Drop
July	15	Classes End
	18	Korean Culture Experience Activities Start
	21	Korean Culture Experience Activities End
	22~23	Dormitory Check-out deadline
August	12	Certificate Issuance
	19	Course Evaluation
	26	Transcript Issuance
*All schedules are subject to change.		



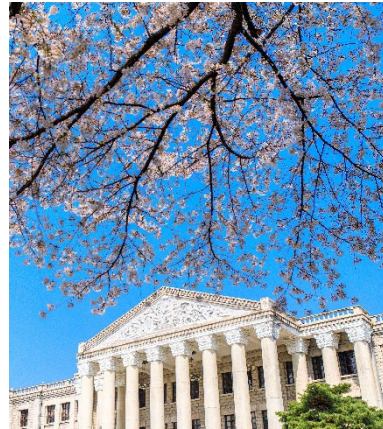
Program Fees

Global Collaborative 2022 Summer Program						
	No.	Type		Amount (KRW)		Note
Mandatory	1	Application fee		100,000		Non-refundable
	2	Tuition	International students (Partner Univ.)	1,200,000		up to 6 credits - fixed price regardless of credits taken
			International students (Non-Partner Univ.)	1~4 credits	5~6 credits	
				1,600,000	2,000,000	
			Domestic students (KHU, others)	200,000 /credit		up to 6 credits
			Working Professionals	200,000 /credit		up to 6 credits
Optional	3	Dormitory		500,000 /month		Twin room - Two people share one room.
	4	Korean Culture Experience Activities		250,000		

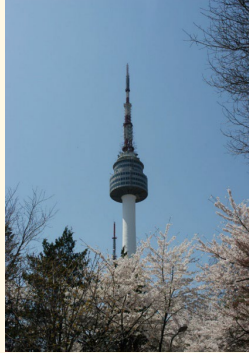
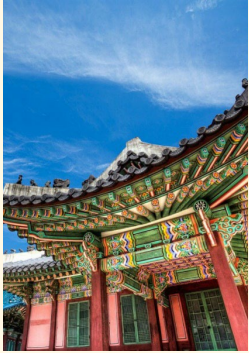
GC 2022 KOREAN CULTURE WEEK

2022 SUMMER PROGRAM





KOREAN CULTURE WEEK (KCW)



Seoul City Tour

Seoul City Tour by Bus and other transportations

A tour around famous tourist places in Seoul.

Such places include

- 1) Seoul Palace area
- 2) Namsan Seoul Tower
- 3) Insa-dong
- 4) Myeong-Dong shopping area
- 5) Hanok Village area and more



Han River Ferry Cruise

Han River (Han-gang) Ferry Cruise

One of the best ways to enjoy the scenery around the Han river that flows through the heart of Seoul. On the Buffet Cruise, you can enjoy the beautiful scenery of Han river while having a special dining experience. The buffet cruise has been featured in many famous Korean dramas including 'My Love from the Star' and the popular show 'Infinite Challenge'.



Everland / Caribbean Bay

Theme Park & Water Park

Everland, an outdoor theme park features exciting rides, zoos, gardens, etc. The most popular attraction is T Express wooden rollercoaster running down to 77-degree angle.

Caribbean Bay, the largest water park in the world, has various facilities such as the indoor and outdoor pools, spa, sauna, wave pool, and slides.

DORMITORY (On-Campus)



※ Each room is furnished with a bed, a wardrobe, a bookshelf & desk, internet access, and a toilet with a shower.

✓ A limited number of on-campus dormitory rooms is available on a first-come, first-served basis.

✓ There is NO MEAL PLAN at the dormitory.



SEWHA HALL

Opened in February 2005, the Sewha hall of Kyung Hee University is designed to facilitate students' adjustment and conveniences. Dormitory accommodates 432 students.

Period of Stay June 26th ~ July 23rd, 2022

Fee KRW 500,000

Persons per room 2 people (Random Allocation)

TUITION & FEES

1,250KRW ÷ 1USD

General Applicant

Partner University

REQUIRED

(1-4 credits) KRW 1,700,000
(5-6 credits) KRW 2,100,000

Tuition Fee

KRW 1,300,000

KRW 250,000 / person

Korean Culture
Week

KRW 250,000 / person

KRW 500,000

Dormitory

KRW 500,000

※ Tuition Fee includes application fees KRW 100,000

※ All fees are subject to change.



Payment Method

Wire transfer only



Dormitory

Will be assigned on a rolling basis



Insurance

Participant's must obtain Insurance policy on their own

HOW TO APPLY

Eligibility

Open to all undergraduate and graduate students around the world

Registration

February 16th ~ May 20th, 2022

Early Registration

February 16th ~ March 31th, 2022

(※ Application fees waiver for early registered students)

Application



Online application at
<http://gafc.khu.ac.kr/gep/>

Payment



Application will be reviewed and the payment instructions for GC 2022 will be emailed to you in 5 business days.

Admission



When admitted to the program, contact your local Korean Embassy or Consulate to find out required documents for visa application.

D-2-8 Visa



KYUNG HEE UNIVERSITY LOCATION



FOR MORE INFORMATION



<http://gafc.khu.ac.kr/gep>



summer@khu.ac.kr



[@khu_gafc](https://www.instagram.com/khu_gafc)



+82-961-0995, 0996

See you in Seoul~